

# ON THE LEVEL



## THE CANAL SOCIETY OF NEW JERSEY

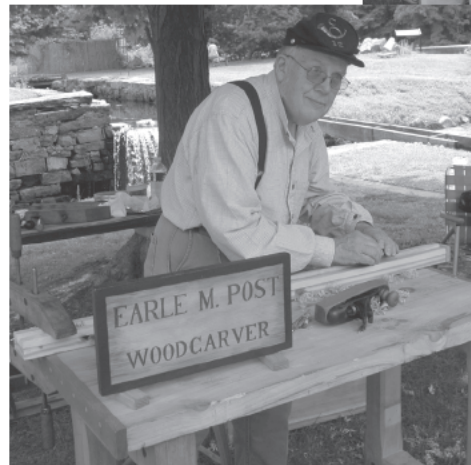
# THERE'S A LOT NEW AT WATERLOO

Over the last seven years the Canal Society has devoted a tremendous amount of energy to Waterloo. When New Jersey DEP terminated its lease with the Waterloo Foundation for the Arts in 2006, it began with efforts to maintain our presence as interpreters of the village's canal history. Soon we were working to save Waterloo's collection of artifacts. We also expanded our annual Canal Day Event into a season-long series of twice-a-month Heritage Days. Our volunteers have cleaned and reopened buildings, developed interpretation and engaged thousands of visitors. In many cases we're doing things we didn't know we could do. However, it hasn't always been clear where such a commitment would lead.

This year we have expanded our interpretation and re-established

our relationship with our partners at Waterloo. We are now part of an executive committee of Waterloo stakeholders that will be working together to redefine the Village.

In addition, New Jersey State Parks has expanded its commitment to Water-



## MEETINGS

Morris County Cultural Center  
300 Mendham Road, Morris Township

### WATERLOO VILLAGE:

*What it really was and what will it become*

**Friday – September 20, 2013 at 7:30 p.m.** – Refreshments at 7:10

ANDREA PROCTOR, RESOURCE INTERPRETIVE SPECIALIST

Over the past 250 Waterloo has seen continuous change. In the 1760s it was the Forge Farm for the Andover Iron Company. In the 1830s it became an inland port on the Morris Canal, and in the 1960 it was transformed into a restored history village, a showplace for fine period furnishings and world-class musical performances.

In this presentation Andrea Proctor, Waterloo's new Resource Interpretive Specialist, will answer the question, "When will Waterloo be open again?" The answer is, of course, that the village never closed.

*(Continued on page 2)*

Top: Long Hill String Band entertains visitors with traditional music. Left: Woodcarver Earle Post demonstrates his skills. Bottom Left: The village blacksmiths, Richard and Richard Brusco, hammer red-hot metal while talking to visitors about the fine points of smithing.

loos by hiring Andrea Proctor as a full-time Resource Interpretive Specialist. Also full-time maintenance staff Pat O'Brian and Ken Lunden have been assigned to look after the grounds.

To find out more about what's happening and learn about some of the challenges we will be facing in the near future, come the September 20th membership meeting. ■

## MEETINGS

*(Continued from page 1)*

Ever since the Waterloo Foundation for the Art went bankrupt in 2006, dedicated groups like CSNJ have been working to keep the village alive. Learn what has been accomplished so far and how the village may be changing to remain relevant and viable. Waterloo isn't closed, but there's a lot of work to do and story to tell.

**Andrea Proctor** is the founder and former Executive Director of *Winakung at Waterloo, Inc.*, an educational organization dedicated to providing quality interactive and hands-on history programs. Andrea was recently hired by the Division of Parks and Forestry, as the full-time Resource Interpretive Specialist for Waterloo Village. She holds a B.A. in history from Centenary College and is currently studying historic preservation at Drew University's Caspersen School of Graduate Studies.

### The Joint Companys

*The D&R Canal and Camden & Amboy Railroad*

**Friday – November 15, 2013 at 7:30 p.m.** – Refreshments at 7:10

**JOE MACASEK, PRESIDENT, CANAL SOCIETY OF NEW JERSEY**

**W**hile George Macculloch was working to complete his Morris Canal across the highlands of New Jersey, farther south men like Robert Stockton and Robert Stevens competed for control of a route across the narrow waist of the state. This route would give the winner access to potential profits from the coal trade and control of the already lucrative trade route between the country's two greatest cities, New York and Philadelphia. Stockton wanted a canal and Stevens a railroad. In the end, the state legislature settled their differences by giving them both charters. Rather than compete, they formed a joint company that for 30 years monopolized transportation and wielded enormous political power.

**Joe Macasek** is a self-employed graphic designer with a Bachelor of Fine Arts in design from the Pratt Institute. He is currently President of the Canal Society of New Jersey; President of the Roebling Chapter, Society for Industrial Archeology; and Director of Communication for the Friends of Historic Speedwell. He is the author of Guide to the Morris Canal in Morris County and offers lectures on local history topics and industrial archeology.

### Directions to the Morris County Cultural Center

**From the Morristown Green.** turn right onto Washington St (County Route 510, formerly NJ Route 24). Travel 3.5 miles west toward Chester. Pass the roads to the Delbarton School and Lewis Morris County Park on the left. After the curve, look for a sign for the MUA on the right, pointing toward the driveway on the left, which is marked by a street light and lighted directional sign. Make a sharp left turn and drive uphill to a Spanish-style stucco building at the top. Parking is in the lot to the left, at the top of the hill. Once inside the main entrance hall of the Cultural Center, the auditorium is to the left. Restrooms are upstairs, with elevator access.

**From Route 287 South.** take Exit 35, Madison Ave. Turn right at the top of the ramp onto Madison Ave (Route 124). Bear right at the next light onto South Street, continue straight through a series of traffic lights and around the Morristown Green. Turn right onto Washington St. (County Route 510, formerly Route 24). Continue as described above.

**From Route 287 North.** take Exit 35, South Street/Madison Ave. At the end of the ramp, turn left onto South St, continue straight through several lights and travel around the Morristown Green. Turn right onto Washington St. (County Route 510, formerly Route 24). Continue as described above. ■

## CANAL WALKS & EVENTS

### Morris Canal Greenway

Throughout 2013, the Passaic County Department of Planning and Economic Development is offering a series of walks to promote the Morris Canal Greenway in Passaic County. For more information: [www.passaiccountynj.org/MorrisCanalGreenway](http://www.passaiccountynj.org/MorrisCanalGreenway) or contact Joe Macasek at [macgraphics1@verizon.net](mailto:macgraphics1@verizon.net)

#### Wayne

**Saturday, Sept 7 – 10:00 a.m.**

Meet at Farmingdale & Deerfield roads in Wayne and explore the feeder lock site and river towpath.

#### Pompton Lakes

**Saturday, Oct 5 – 10:00 a.m.**

Meet on Mathes Avenue in Pompton Lakes and explore the northern end of the Greenway.

### D&R Canal

#### East Millstone CanalFest

**Saturday, October 19 – 11:00 to 4:00.**

A beautiful autumn day on the banks of the historic Delaware & Raritan Canal in East Millstone. What a perfect backdrop for an outdoor family event with music, arts and crafts. Originally started to celebrate the beauty and history of the canal and East Millstone, CanalFest has continued to grow in its three-year history. This year over 2500 people are expected to visit the arts and crafts vendors, participate in family-oriented activities in the Children's Area, listen to one of the lectures about canal life and some of the environmental issues facing it, shop in the quaint businesses in the village, or listen to the great sounds of some local bands on one of the three stages. Whatever the age, CanalFest is always fun. And the bridegroom's home will be open to visitors.

### Bloomfield Canal Tour

*Sponsored by the Historical Society of Bloomfield and the Bloomfield Recreation Department.*

**Saturday, November 9 – 10:00 a.m.**

Morris Canal Hike through Bloomfield. Explore the path of the Morris Canal through Bloomfield with historic maps

# MORRIS CANAL GREENWAY

## Morris Canal Greenway Working Group

This year the Morris Canal Greenway Working Group, sponsored by the New Jersey Transportation and Planning Authority, formed an executive team made up of the major Greenway stakeholders including the CSNJ. Plans are under way build a web site that will help to create a state-wide identity for the Greenway project. At a Working Group meeting held at Waterloo in August, a mission statement was formulated and a Greenway symposium is planned for 2014.

## 17<sup>th</sup> Annual New Jersey Land Conservation Rally

In March, Joe Macasek from the Canal Society, Jennifer Gonzalez from the Passaic County Planning Department, and Jim Lee Jr. from the Warren County Canal Committee participated in the 17<sup>th</sup> Annual New Jersey Land Conservation Rally at the NJ Institute of Technology in Newark. In a speakers' Lightning Round, Jim spoke of his life-long fascination with the Morris Canal.

## Paterson Canal Park

Currently, the right-of-way of I-80 covers most of the route of the Morris Canal through Paterson. Although few remains survive within the city, a three block-long section of the canal berm along Barnes Street is walkable and is now part of the Morris Canal Greenway.

and photos. This four-hour excursion, conducted by Rich Rockwell and Ron Rice, will start at 10:00 a.m. with a three-mile hike from Wright's Field to Hoover Avenue. This will be followed by a bus ride to intact canal sections in the northern part of Bloomfield, and a return bus ride to Wright's field at 2:00 p.m. There will be a \$2.00 charge of to cover expenses.

Space is limited, so reservations are required. To reserve a space, e-mail [morriscanal@gmail.com](mailto:morriscanal@gmail.com). ■



An aerial view showing the alignment of the Morris Canal near the intersection of Grand and New Streets in Paterson. This short section of canal prism will become Paterson Canal Park.

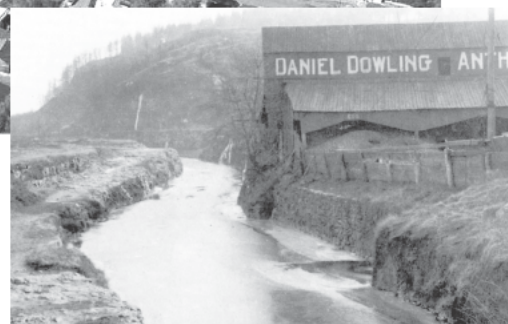
In April the Passaic County Board of Chosen Freeholders passed a resolution approving the development of the site as the Paterson Canal Park. The resolution allocated \$14,000 to begin laying out paths and developing interpretive signage.

## Paterson-Clifton Greenway

Work on the Transportation, Community, and System Preservation (TCSP) grant to construct the on-road portions of the Morris Canal Greenway in the cities of Paterson and Clifton is in the engineering/design phase. Construction work is anticipated to start next year. The grant will cover construction of the on-road portions of the greenway along McBride Avenue in Paterson as a part of an annual re-paving program.

## Montville Canal Park

Last fall, a dedicated group of volunteer from the Montville Historical Society and the Canal Society of New Jersey removed several tons on trash and debris from the site of inclined Plane 9 East in Montville. This year, township maintenance personnel cut trees, laid out paths and installed interpretive signs. At a short



This historic view looks west along the canal from the New Street bridge. Dowling's Coal Yard and Garrett Mountain can be seen the background.

ceremony on July 7th, the new park was officially dedicated. Future plans include a monument sign along Route 202, parking spaces and extending the trail along the towpath toward Plane 8 East. ■

## BOOK SALE

This fall the Canal Society will be selling a wide selection of books on canal history and technology. Many of these book are rare and out of print. Take this opportunity to round out your collection. Selections are limited. Get the books you are looking for while they last.

Be sure to check out the sales table at the upcoming September and November meetings or e-mail

[macgraphics1@verizon.net](mailto:macgraphics1@verizon.net)

# WATERLOO SPECIAL EVENTS

This season, board member Bill Pegg has organized a series of special events for Waterloo Heritage Days. The Hoboken Nine vintage baseball team, the Long Hill String Band, woodcarver Earle Post, and bobbin lace maker Joan Post have joined us multiple times. Richard Brusco and his son work in the blacksmith shop on all Heritage Days. Bill has recognized that museums need special events to attract visitors and we are grateful for his successes this year. Additionally, Bill mans the front gate, as he has done for the past five years. Please join us on September 14 for another day of special events. We will also be open for Heritage Days on the 2nd and 4th Saturdays of September and October.

If you can volunteer any of your time, please contact Anita Norris at [aenorris@verizon.net](mailto:aenorris@verizon.net) or Joe Macasek at [macgraphisc1@verizon.net](mailto:macgraphisc1@verizon.net) or call 973-292-2755. ■



*Bobbin lace maker Joan Post.*

## CALENDAR OF EVENTS

<b>Friday</b>	<b>Sep 20</b> 7:30 p.m.	<b>Membership Meeting</b> <i>Morris County Cultural Center</i>
<b>Friday</b>	<b>Nov 15</b> 7:30 p.m.	<b>Membership Meeting</b> <i>Morris County Cultural Center</i>
<b>Saturdays</b>	<b>Sep &amp; Oct</b> September 14 September 28	<b>Waterloo Canal Heritage Days</b> October 12 October 26

[www.CanalSocietyNJ.org](http://www.CanalSocietyNJ.org)

[nj-cnal@googlegroups.com](mailto:nj-cnal@googlegroups.com)



The Canal Society of New Jersey received an operating support grant from the New Jersey Historical Commission, a division of the Department of State.

FIRST CLASS MAIL

CANAL SOCIETY OF NEW JERSEY

PO Box 737  
New Jersey 07963-0737

ADDRESS SERVICE REQUESTED