

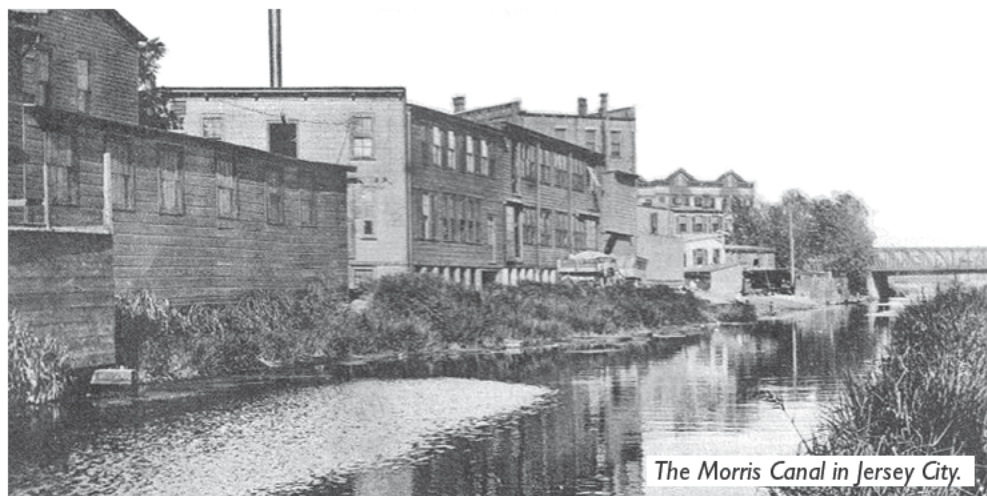
# ON THE LEVEL



## THE CANAL SOCIETY OF NEW JERSEY MORRIS CANAL GREENWAY NOW A STATE-WIDE PROJECT

This past year the Morris Canal Greenway has taken enormous strides forward. With Greenway initiatives taking shape in both Passaic and Hudson Counties, the Morris Canal Greenway Working Group has formed an executive team made up of major stakeholders including the CSNJ. The goals of this organization, sponsored by the New Jersey Transportation and Planning Authority, are to build public awareness of the project by creating a state-wide Greenway identity and to create synergy by bringing communities with Greenway projects together under a common cause. Early this year the Working Group will be holding county meetings to show community leaders how the project can help them with their open space, education, and heritage tourism goals.

Since the 1980s, the CSNJ and the Warren County Morris Canal Committee have been working to preserve the



The Morris Canal in Jersey City.

route of the Morris Canal. In 2005, the Canal Society created a Greenway plan that established goals and identified canal assets in Morris County. Although a lot has been accomplished, efforts have been centered in Morris and Warren Counties.

A new level on interest in the project began in 2012 when the Passaic County

Department of Planning and Economic Development completed a Greenway study that has since been adopted as an element of the county's master plan. With the support of the county freeholders, the Planning Department has been aggressively supporting Greenway projects across Passaic County. The Canal Society's role has been that of consultant, advisor, and advocate. We have provided the history, shown how it could be interpreted, and given numerous walks and talks to build community support.

Since then, Jersey City has completed a Greenway Plan in 2013, the subject of the presentation at January's membership meeting. Essex County has also undertaken a canal resource study.

Early this year, the Greenway Working Group will be holding its public meeting in Morris County. Although the meet-

*(Continued on page 5)*

## MEETINGS

**Morris County Cultural Center**  
300 Mendham Road, Morris Township

**Friday – January 17, 2014 at 7:30 p.m.** – Refreshments at 7:10

### MORRIS CANAL GREENWAY IN JERSEY CITY

NAOMI HSU, AICP, PP

JERSEY CITY DIVISION OF CITY PLANNING  
SENIOR TRANSPORTATION PLANNER

It became clear, almost as soon as the Morris Canal was completed from the Delaware River at Phillipsburg to the Passaic River at Newark, that a direct connection to New York Harbor would be required to insure the canal's success. This extension across the Kearny Meadows, the Passaic and Hackensack Rivers, and around the Bergen Ridge was completed in 1836, giving the canal direct access to the country's busiest port with connection to coastal and international trade. It was one of the first of

*(Continued on page 2)*

**Pages 3 & 4 contain lists of upcoming walks and events that you can pull out and keep handy for future reference.**

## MEETINGS

(Continued from page 1)

many transportation systems to establish a foothold on the New Jersey side of the Hudson River.

In 2013 the City of Jersey City announced the completion of its Morris Canal Greenway Plan to create a bicycle and pedestrian greenway that follows, to the greatest extent possible, the former route of the Morris Canal. In her presentation, Transportation Planner Naomi Hsu will tell how this plan has re-identified the route of the canal and established goals that will make the canal an important part of a growing urban community.

**Naomi Hsu, AICP, PP** is the transportation planner for the City of Jersey City, Division of City Planning. The division is committed to creating a vibrant urban environment where people have mobility options, including walking, bicycling, and transit. She holds a Master of City Planning degree, and is a certified planner of the American Institute of Certified Planners as well as a licensed professional planner in the state of NJ. She is also proud to be a life-long resident of New Jersey.

**Friday – March 21, 2013 at 7:30 p.m.** – Refreshments at 7:10

### The Joint Companies: Part Two

*The D&R Canal and Camden & Amboy Railroad*

**JOE MACASEK, PRESIDENT, CANAL SOCIETY OF NEW JERSEY**

In part one we learned how the Delaware & Raritan Canal and the Camden and Amboy Railroad formed a joint company that created an enormously powerful transportation firm that dominated New Jersey business and politics for almost 40 years. In this talk we will look at the canal and the railroad in detail to see how they worked, what made them different, and how they fit into the growing web of business and technology that was changing the way the world worked. We will also find out what happened to the Joint Companies after their monopoly privileges expired in 1869 and how the canal has transitioned into a new and important role in today's changing world.

**Joe Macasek** is a self-employed graphic designer with a Bachelor of Fine Arts in design from the Pratt Institute. He is currently President of the Canal Society of New Jersey; President of the Roebling Chapter, Society for Industrial Archeology; and Director of Communication for the Friends of Historic Speedwell. He is the author of Guide to the Morris Canal in Morris County and offers lectures on local history topics and industrial archeology.

### Directions to the Morris County Cultural Center

**From the Morristown Green,** turn right onto Washington St (County Route 510, formerly NJ Route 24). Travel 3.5 miles west toward Chester. Pass the roads to the Delbarton School and Lewis Morris County Park on the left. After the wide left curve, look for a sign for the MUA on the right, pointing toward the driveway, which is marked by a street light and lighted sign. Make a sharp left turn and drive uphill to a Spanish-style stucco building at the top. Parking is in the lot to the left at the top of the hill. Once inside the main entrance hall of the Cultural Center, the auditorium is to the left. Restrooms are upstairs, with elevator access.

**From Route 287 South,** take Exit 35, Madison Ave. Turn right at the top of the ramp onto Madison Ave (Route 124). Bear right at the next light onto South Street, continue straight through a series of traffic lights and around the Morristown Green. Turn right onto Washington St. (County Route 510, formerly Route 24). Continue as described above.

(Continued on page 4)

## WATERLOO VOLUNTEERS SPECIAL THANKS

Last year's Waterloo activities would not have been possible without the loyal volunteers who gave countless hours of their time and energy. A special thanks to all of you!

Bob Barth  
Bob Bodenstein  
Doug Bradley  
Richard & Richard Brusco  
Diane Cece  
Lydia Chiappini  
Marilyn Craine  
Richard Cramond  
Dick Draper  
John Drennan  
Dennis Furbush  
Rick Giles  
Bill Gregor  
John Hemmings  
Rod Howarth  
Judy Keith  
Neil Klingenberg  
Sharon Kuechelmann  
Steve Lauf  
Joe Macasek  
Bruce McCutcheon  
Jory Miller  
Anita Norris  
North Country Spinners  
Bill Pegg  
Earle & Joan Post  
Rich Richter  
Bierce Riley  
Janet Spain  
Jeffrey Stanton  
John Stanton  
Susan Sooy  
Judy Truex  
Peter Walker  
Lew & Debbie Wefferling





# WATERLOO – 2014

With the 2013 Waterloo season hardly over, we are already planning for this coming summer. Last year the CSNJ's expanded programming brought in more visitors. Winakung at Waterloo's school programs brought hundreds of children into the Village and contributed funds to help support the state's new administrative and maintenance staff. The Friends of Waterloo Village hosted sold-out events that raised money for special projects.

This year plans are moving forward to lease some non-historic portions of the Village to a private catering concern. Terms of the lease will bring in much-needed funds that will be used stabilize and restore Waterloo's deteriorating streetscape. To

minimize effects on the historic areas, the Village entrance will be relocated to bring visitors from the parking area directly onto the unpaved main road. Portions of the Seymour Smith house will be brought back into service as state park office space and a visitors information center.

With these changes in the works, the Canal Society is working with state parks officials and other Waterloo stakeholders to develop a strategic plan that will help keep efforts to revitalize the Village on track.

We also plan to reorganize our Waterloo summer programming around a canal town theme and develop two new interpretive areas. Watch for the lead story in the next newsletter for more details. ■



*Waterloo's Seymour Smith house.*

## CAPTAIN BILL MCKELVEY RETIRES FROM CSNJ BOARD

At the end of 2013, after over 30 years of service, Captain Bill will be leaving the CSNJ Board of Directors to focus on some of his many other interests and activities. Bill is widely known as a life-long proponent of transportation history. He is a life member of the Society and has served as board member and vice president.

Throughout the years Bill has tak-

en on the role of author, publisher, tour director, collector, and leader in the effort to preserve all forms of New Jersey's transportation history.

We thank him for his dedication, generosity, and tireless enthusiasm. Although he is stepping back from a leadership role, our loss is tempered in the knowledge that he is still an active member and a supporter of our organization. ■

## MEMBER NEWS

### *RICHARD W. CRAINE*

Richard W. Craine, 81, passed away on Friday, Oct. 25, 2013, at Cedar Crest Village in Pompton Plains, NJ. Born in Altoona, Pa., Richard grew up in Marietta, Pa.; he lived most of his life in Nutley, NJ, and the last 3-1/2 years at Cedar Crest. Dick graduated from Penn State with a degree in electrical engineering and completed a masters in physics at Rutgers, where he was a teaching assistant. He was employed by ITT and held four patents relating to his work there. He was the loving husband of Marilyn Woodham Craine; father of Megyn and Richard, and grandfather of Alexandra Elizabeth. Dick was a long-time member of the Canal Society, and a regular at meeting and on trips. Dick and Marilyn were volunteers at the museum for many years, and participated in Waterloo Canal Day since its inception in the 1990s. He will be missed by all.

## MORRIS CANAL GREENWAY

*(Continued from page 1)*

ing date is not yet set, we are announcing it here because it is so important. If you live along the route of the canal in Morris County let your community leaders know that the Greenway is winning awards and receiving grant money in other counties. We can do the same here.

We hope to attract town officials, community planners, historical society leaders, and concerned citizens. The meeting date, time, and location will be announced in the Canal News.

### **Wharton**

Phase Two of the Lock 2 East reconstruction project is moving forward this year. Cap stones will be added to complete the lock walls and new wooden lock gates will be built and installed. Wharton has also received a grant from the Morris County Preservation Trust to create two new interpretive panels and replace old, deteriorating signage.

### **Clifton Canal Park**

Clifton Canal Park, established in the mid-1980s by Canal Society member Jack Kuepfer, is in danger. A power transmission line redevelopment project will temporarily close the park while work is in progress. However, new power company regulations may prohibit fu-

*(Continued on page 6)*

# D&R CANAL

## 2014 WALKS & EVENTS

*These walks are sponsored by the D&R Canal Watch. The walks are free, but donations are welcome and appreciated. For additional information contact Bob Barth at 201-401-3121 or [bbarth@att.net](mailto:bbarth@att.net).*

### **Sunday, January 26 – 2:00 p.m.**

Two-Canal Walk. Meet outside of the Lambertville Station restaurant, near the caboose. We will begin on the D&R Feeder on the New Jersey side and then cross the Delaware River to walk along the Delaware Canal in New Hope. Cookies and hot chocolate await at the locktender's home.

### **Saturday, February 8 – 10 a.m.** (Walk 1)

D&R Canal towpath from Landing Lane bridge to Lock 11, 5.3 miles. Meet at South Bound Brook, Lock 11, across from the post office on Canal Road; then we will travel to the starting point.

*This is the first of a series of interpretive hikes that will connect Landing Lane in New Brunswick to the northern end of the feeder canal at Bull's Island.*

### **Saturday, March 22 – 10 a.m.** (Walk 2)

D&R Canal towpath from Lock 11 in South Bound Brook to East Millstone, 5.8 miles. Meet at East Millstone, where the canal intersects Amwell Road; then we will travel to the starting point. A shorter, 3.1-mile hike will be available.

### **Saturday, April 12 – 10 a.m.** (Walk 3)

D&R Canal towpath from East Millstone to Griggstown, 5.6 miles. Meet at the Griggstown Causeway; then we will travel to the starting point.

### **Sunday, April 13 – 10 a.m.**

History Bike Tour on the towpath from Griggstown to Kingston and back, 10 miles round trip. Explore the structures along the D&R Canal with Canal Watch trustee Bob Barth. Meet at the parking lot on the Griggstown Causeway.

### **Saturday, May 17 – 10 a.m.** (Walk 4)

D&R Canal towpath from Griggstown to Kingston Lock 8, 5.0 miles. Meet at the Kingston Lock; then we will travel to the starting point. A shorter, 3.1-mile hike will be available.

### **Sunday, June 8 – 2 p.m.**

D&R Canal Watch Annual Meeting. Meet Ashbel Welch, chief engineer when the canal opened in 1834. Actor Bob Gleason will portray this important Lambertville resident, who instituted many changes on the canal. The meeting will be held at the old Lawrence Township Municipal Building, across the parking lot from the police headquarters, Route 206, just south of I-95.

### **Saturday, July 5 – 10 a.m.** (Walk 5)

D&R Canal towpath from Kingston Lock 8 to Alexander Road, 3.8 miles. Meet at Turning Basin Park on Alexander Road; then we will travel to the starting point. A shorter, 2.2-mile hike will be available.

## ***Spirit of the Jerseys State History Fair***

### **Saturday, May 10 – 11 a.m. to 5 p.m.**

Washington Crossing State Park. Visit the tables of the D&R Canal Watch, the Canal Society of New Jersey, and many other historical groups. Take a boat ride on the feeder canal. Listen to canal troubadour Roy Justice. Reenactors, vintage cars, games, vendors, demonstrations from all periods of our state's history.

*Come and celebrate New Jersey's 350th anniversary.*

## CANAL WALKS

### **Morris Canal**

Throughout 2014, the Passaic County Department of Planning and Economic Development will offer a series of walks to promote the Morris Canal Greenway in Passaic County. The dates are being planned and will be announced via e-mail and on the CSNJ web site. For more information:

#### **Morris Canal Greenway Project**

[www.passaiccountynj.org/  
MorrisCanalGreenway](http://www.passaiccountynj.org/MorrisCanalGreenway)

#### **Joe Macasek**

[macgraphics1@verizon.net](mailto:macgraphics1@verizon.net)

### **Sunday, March – 10:00 a.m.**

**Clifton** – Meet at Clifton Canal Park and explore the Greenway route along Broad Street.

### **Sunday, April – 10:00 a.m.**

**Paterson** – Meet at Lambert Castle and explore the Greenway route at Garret Mountain and through Paterson.

### **Sunday, May – 10:00 a.m.**

**Little Falls** – Meet at the Woodland Park Library and walk the Greenway route from Woodland Park to Little Falls.

### **Sunday, September – 10:00 a.m.**

**Wayne** – Meet at Farmingdale & Deerfield Roads in Wayne and explore the feeder lock site and river towpath.

### **Sunday, October – 10:00 a.m.**

**Pompton Lakes** – Meet on Mathes Avenue in Pompton Lakes and explore the northern end of the Greenway.

## **Sunday Walks at Waterloo**

Join tour guide Bob Barth for an interesting and informative stroll through Waterloo Village. These Sunday tours start at the main gate at 1:00 p.m. Afterwards there will be an option for a more challenging two-mile walk to visit historic canal features on the Morris County side of the Musconetcong River. Please register by contacting Bob Barth at [bbarth@att.net](mailto:bbarth@att.net) or 201-401-3121.

**March 30 – May 18 – July 13**

## MEETINGS

(Continued from page 2)

**From Route 287 North**, take Exit 35, South Street/Madison Ave. At the end of the ramp, turn left onto South St, continue straight through several lights and travel around the Morristown Green. Turn right onto Washington St, (County Route 510, formerly Route 24). Continue as described above.

### Winter Weather Alert!

The society's winter program meetings are subject to cancellation if weather conditions make it unsafe for members to attend. We will make every effort to post any meeting cancellations on the society website by 10:00 a.m. on the day of the meeting. If access to our website is not convenient, call 973-292-2755 for meeting cancellation information. ■

## MEMBERSHIP RENEWAL TIME IS HERE!

**Y**ou have recently received a notice that it's time to renew your membership with the Canal Society of New Jersey. In the coming year we will have more tours and programs and will continue our involvement with Waterloo and the Morris Canal Greenway. We hope that we can count on your continued support. If you have not already sent in your dues, we ask you to do so as soon as possible. Please remember that membership runs for a calendar year from January to December. However, if you joined over the summer you will not receive a dues notice until next fall. We greatly value your support! Together we can do great things to preserve and enhance New Jersey's canal heritage! ■

## ON THE LEVEL



### THE CANAL SOCIETY OF NEW JERSEY

PO Box 737, Morristown, New Jersey 07963-0737

ON THE LEVEL is published three times a year by the Canal Society of New Jersey.

#### OFFICERS

**President:** Joe Macasek  
**Vice President:** Vacant  
**Treasurer:** Judy Keith  
**Recording Secretary:** Dennis Furbush  
**Corresponding Secretary:** Vacant  
**Past President:** Robert Barth

#### DIRECTORS

Bob Bodenstein  
Richard Draper  
Rod Howarth  
Bierce Riley

Bill Pegg  
Rich Richter

#### CONTACT INFORMATION

**Financial Administrator:** Kate Gordon  
973-579-5523  
**Membership Chairman:** Judy Keith  
973-347-9199 – [jakeith23@verizon.net](mailto:jakeith23@verizon.net)  
**Museum Director:** Rich Richter  
973-728-0316 – [FIERO87@Verizon.net](mailto:FIERO87@Verizon.net)

## 2014 INDUSTRIAL HERITAGE WALKS

March thru June 2014  
SIXTEENTH YEAR

March 29

– **Oreland: Morris County's Only Ghost Town**

April 12

– **Industrial Archeology in the Farny Highlands** (NEW)

April 26

– **Long Pond Iron Works**

May 10

– **Morris Canal Inclined Planes:** Ledgewood

June 7

– **High Line:** Manhattan (NEW)

June 21

– **Upper Rockaway River Forges**

---

*Industrial Heritage Walks are sponsored by the  
Morris County Park Commission*

---

For Information & reservations, please e-mail:  
[macgraphics1@verizon.net](mailto:macgraphics1@verizon.net)  
or call 973-292-2755

## BOOK SALE

This winter the Canal Society will continue selling a wide selection of books on canal history and technology. Many of these books are rare and out of print. Take this opportunity to round out your collection. Selections are limited. Get the books you are looking for while they last.

---

Be sure to check out the sales table at the upcoming January and March meetings or e-mail

**[macgraphics1@verizon.net](mailto:macgraphics1@verizon.net)**

908-722-9556 – [nj-cnal@googlegroups.com](mailto:nj-cnal@googlegroups.com) – [www.CanalSocietyNJ.com](http://www.CanalSocietyNJ.com)



# AMERICAN EXPERIENCE



This fall the CSNJ was contacted PBS (Public Broadcasting System) seeking partners to add material to their new *American Experience*, *Engineering Map of America*. The

map, featuring landmarks of American engineering history, will become part of the PBS web site early in 2014. Visitors to the site will be able to click on map locations to view photos and facts, take a virtual tour of related sites, or view collections of information on related topics. Starting in January, the Canal Society will be posting images and text to the site to help PBS viewers learn about New Jersey's historic canals. ■

## CALENDAR OF EVENTS

<b>Friday</b>	<b>January 17</b>	<b>Membership Meeting</b>
	7:30 p.m.	<i>Morris County Cultural Center</i>
<b>Friday</b>	<b>March 21</b>	<b>Membership Meeting</b>
	7:30 p.m.	<i>Morris County Cultural Center</i>
<b>Saturday</b>	<b>May 10</b>	<b>Spirit of the Jerseys State History Fair</b>
		<i>Washington Crossing State Park</i>
<b>Friday</b>	<b>May 16</b>	<b>Membership Meeting</b>
	7:30 p.m.	<i>Morris County Cultural Center</i>

[www.CanalSocietyNJ.org](http://www.CanalSocietyNJ.org)

[nj-cnal@googlegroups.com](mailto:nj-cnal@googlegroups.com)

## MORRIS CANAL GREENWAY

(Continued from page 1)

ture parking under the high tension-wires that cross the park. Clifton values its Canal Park and alternatives are being sought.

### Mt. Olive Township

Mt. Olive Township and Givaudan, a worldwide manufacturer of fragrances and flavors, are teaming up to create a Braille trail along the township's section of water-filled Morris Canal. Although this is not quite the Greenway partnership we envision, it nonetheless creates a public pathway along a very important section of canal. ■

*Canal Society's New Jersey Canal  
Museum at Waterloo.*



The Canal Society of New Jersey received an operating support grant from the New Jersey Historical Commission, a division of the Department of State.

ADDRESS SERVICE REQUESTED

PO Box 737  
Morristown, New Jersey 07963-0737

CANAL SOCIETY OF NEW JERSEY

FIRST CLASS MAIL